



# PORT OF DEN HELDER SEAPORT



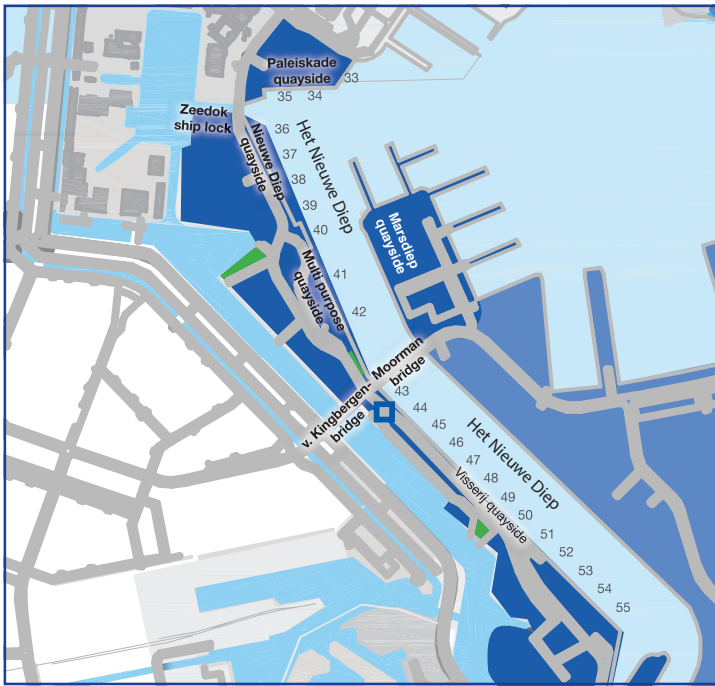
## OFFSHORE: LOGISTICS AND TECHNOLOGY

For more than thirty years, Den Helder has been home to the offshore sector operations & maintenance.

With Den Helder Airport around the corner, the seaport is not only a strategic but also a logical and cost-effective choice. Breakneck developments in the field of technology and research have led to rapid growth in demands from the market, which to this date have always been successfully met by the seaport. This unique combination means that the seaport of Den Helder has become the southern North Sea's largest offshore logistic hub. From this location, nearly every platform in the Dutch sector of the southern North Sea receive their supplies and crews.

## UNIQUE CHARACTERISTICS

- LOGISTIC CENTRALISATION
- ISPS-CERTIFIED QUAYSIDE
- RAPID HANDLING
- DIRECT OPEN CONNECTION TO THE SEA
- DEEP WATER HARBOUR
- SHORT SAILING TIMES TO THE CONTINENTAL SHELF
- NEAR DEN HELDER AIRPORT
- PUBLIC QUAYSIDE



Draft Port of Den Helder at water level NAP  
 Port entrance till quay 42: 9 m and quay 43 till quay 55: 7 m

■ Parking ■ Office Port of Den Helder

## CIVILIAN-MILITARY COOPERATION FOR OPTIMUM PORT CAPACITY

Knowledge sharing and the exchange of services and infrastructure: anything is possible in the seaport, partly thanks to the excellent cooperation with the Royal Dutch Navy. Quaysides, knowledge and facilities have all been made available for civilian parties. The joint use of the infrastructure and the Naval quaysides operated by civilian companies guarantees hugely-extended port capacity. This in turn offers businesses more space to do business. In addition, the maintenance and logistic services for high-end, high-tech (maritime) systems delivers added value for all the facilities required for the offshore and civilian sector. Den Helder, as the centre for the North Sea, can offer more thanks to this unique cooperation!

## UNIQUE CHARACTERISTICS

- FLEXIBLE SPACE
- USE OF NAVAL OVERCAPACITY
- COMBINED USE OF HIGH-TECH MARITIME SYSTEMS
- LOGISTIC MAINTENANCE SUPPORT
- CLUSTER OF KNOWLEDGE INSTITUTES

SEAPORT	
<b>NIEUWE DIEP QUAYSIDE LENGTH (DIRECT SEA ACCESS), FULLY ISPS</b>	495 m
<b>MULTI PURPOSE QUAYSIDE LENGTH</b>	200 m
<b>TOTAL ISPS-CERTIFIED QUAYSIDE LENGTH (DIRECT SEA ACCESS)</b>	695 m
<b>NIEUWE DIEP QUAYSIDE LENGTH (BEYOND THE MOORMAN BRIDGE), OF WHICH TOTAL ISPS LENGTH</b>	970 m 150 m
<b>MOORMAN BRIDGE OPENING WIDTH</b>	18 m
<b>DOCKSIDE SPACE NIEUWE DIEP (DIRECT SEA ACCESS)</b>	up to 11500 m <sup>2</sup>
<b>DOCKSIDE SPACE MULTIPURPOSE</b>	up to 2300 m <sup>2</sup>
<b>DOCKSIDE SPACE NIEUWE DIEP (BEYOND THE MOORMAN BRIDGE)</b>	up to 1800 m <sup>2</sup>
<b>WATER DEPTH RUNUP</b>	10 m in relation to NAP
<b>WATER DEPTH (DIRECTLY BY THE SEA)</b>	9 m in relation to NAP
<b>WATER DEPTH (BEYOND THE MOORMAN BRIDGE)</b>	7 m in relation to NAP
<b>AXLE LOAD</b>	max traffic class 90
<b>DOCKSIDE LOAD</b>	max 4t/m <sup>2</sup>
<b>LIFTING PLATFORM</b>	max 600 ton transhipment
<b>DRINKING WATER</b>	up to 225 kub per hour
<b>ELECTRICITY NIEUWE DIEP QUAYSIDE</b>	32 Amp, 220 V - 380 V
<b>SECURITY</b>	ISPS-certified 24 hours a day 365 days a year
<b>NAVAL DOCK:</b>	
	>1800 m available

